



COMPANY PROFILE



SAUNAS BUILDER SDN BHD

No 4, Jalan TK 5/44, Kinrara Industrial Park, Taman Kinrara Seksyen 5,
47100 Puchong, Selangor D.E.

☎ +603-8080 3185
☎ +603-8080 3195





INTRODUCTION

SPECIALIZED IN COMMERCIAL AND DOMESTIC
SAUNA AND STEAM ROOM CONSTRUCTIONS,
INSTALLATION, SERVICING AND REPAIRING.

Saunas Builder Sdn Bhd is a construction company dealing with the Health and Leisure industry, mainly involved with the construction, installation, supplying and servicing of Sauna and Steam Room throughout the nation.

We stand as an independent company, we provide parts and accessories to main-stream manufacturers of both Domestic and Commercial, we can offer you a competitive quote.

We will visit your proposed site, advice, design, construct, install and service your requirements to ensure customer satisfaction is achieved.

With over 18 years of experience in installing and servicing sauna and steam system all technical problem.



PROJECTS REFERENCE

SP Setia Berhad

Setia Alam Club House
Sky Residence, K.L
Trigon Setiawalk, Puchong
Trefoil, Shah Alam
Setia Sky88, Johor
Sky Breeze, JB
Setia City Residence, Shah Alam

Binastra Construction Sdn Bhd

The Reach, Titiwangsa
Green Residence, Cheras
Citizen, Old Klang Road
Citizen 2, Old Klang Road
Sinaran, Wangsa Maju

KSL Holdings Berhad

D' Inspire Residence
D' Secret Garden
KSL Hot Spring Resort
Residence Taman Daya

UOA Berhad

Setapak Green Condo
Camellia Service Suites
Capri Hotel, Bangsa South
South Bank Residence

Brunsfeld Construction Sdn Bhd

Embassy View, Jalan Ampang
Oasis, Damansara
Kenny Hills, K.L

Amanah Scott Properties

Ascott Residence, K.L

See Hoy Chan/ Sara Timur Sdn Bhd

Uptown Residence PJ
Seringin & Jade Residence Sabah

Capital Square Sdn Bhd

Capital Square Club
6 Capsquare Residence

Genting Property Construction Sdn Bhd

Genting Purakencana, Johor
Genting Element

MRCB Berhad

Aman Desaru Resort & Spa
9 Seputeh, Kuala Lumpur

Ekoquest Construction Sdn Bhd

Eko Cheras Service Apartment

Ideal City Development Sdn Bhd

Infinity Towel, Petaling Jaya

Casa Andaman Sdn Bhd

ARC Austin Hill, Johor Bharu

Pembinaan Yuen Seng Sdn Bhd

Palmyra Residence

IJM Land Berhad

Legenda Tasek Condo JB
Land D' Ambient @ Permas Jaya Johor
The Light Collection, Pulau Penang
Radia Bulit Jelutong (Phase 1-4)
Pantai Sentral Park
Secoya Residence Bangsar

Lian Fung Construction Sdn Bhd

Silk Residence
Emerald Residence
Silk Sky Residency
Landmark 1 & 2
Symphony Residence, Cheras

Mitrajaya Group

MK 20
MK 22 Mont Kiara
Sebana Cove Resort
280 Park Homes Duplex

Mayland (M) Sdn Bhd

Royal Regent Condominium, K.L
Pallazio Residence, JB
Park Regency, JB

Sycal Berhad

Pullman Hotel Bangsar
Duta Suria, Ampang

Alpha Astral Sdn Bhd/Al-Ambia

Green Field Regency, Johor

Sentoria Bina Sdn Bhd

Caribbean Bay Resort
Arabin Bay Resort, Kuantan

Matrix Holding Berhad

1 Sendayan
D' Tempat Country Club

Aset Kayamas Sdn Bhd

The Henge, Kepong
The Haute, Dato Keramat

Aset Kayamas Sdn Bhd

Maxim Kaiser, Kuala Lumpur
Maxim Majestic, Kuala Lumpur

Yanjian Group Construction (M) Sdn Bhd

Eastern Corridor @ Cyberjaya

Mujur Sepakat Sdn Bhd

Zenith Hotel, Putrajaya

Danau Permai Resort

Danau Permai Resort

Terminal Perintis SB (Tiong Nam Group)

Pine Tree Marina Resort, Puteri Harbour, Johor Baharu

IOI properties Sdn Bhd

Puteri Palm Resort, Putrajaya
Puteri Town Villa, Puchong
Palmyra Bandar Puteri, Bangi
The Cruise, Puchong
CLIO 2

Pembinaan Masteron Sdn Bhd / Perfect Eagle Development

Calisa O
O2 Residence, Puchong South
D' Aman, Puchong
Aurora Residence
Koi Prima 2 & 3

Berjaya Land Berhad

Covillea Condominium
KM1 East & West, Bukit Jalil
Berjaya Club House @ Batu Pahat
Ritz Carlton Residence Tower, K.L

Villamas Sdn Bhd/ Trientel Industries Sdn Bhd

Zefer Hill, Puchong
Verde, Ara Damansara
The Andes, Bukit Jalil

Trinity Heights Sdn Bhd

The Zest Residence
The Z Residence, Bukit Jalil

WI Design

Phileo Resort & Spa, Melaka

Aston Star Sdn Bhd/ UEM

MK 20 Arcoris Residence
Mont Kiara Pelangi

Modular Platinum

Beverly Heights
Imperial Residence

Sri Binaraya Sdn Bhd

Le Pavilion, Puchong
Sunway Green Field Residence

Aset Kayamas Sdn Bhd

Oval Damansara
9ine Residence Cheras

KSyr Construction Sdn Bhd

Hyatt Regency, Kuantan

Aturan Prisma Sdn Bhd

Upper East Tiger Lane, Ipoh

Kenwingston Group

Kenwingston Square Garden, Cyberjaya

Pembinaan Ikkhasas Sdn Bhd

Shaftbury Square Garden

Eco World - Eco Sanctuary Sdn Bhd	VST Group	Sky World
Eco Sanctuary, Teluk Panglima Garang	Mont & The Reizz Residence, Penang	Sky Siearra, Kuala Lumpur
Good Sunstar Sdn Bhd	Casa Kasturi Sdn Bhd	Naim Engineering Sdn Bhd
Amerald Hotel, Johor Bharu	Casa Residence	Sapphire Kuching
NTP World Corporation Sdn Bhd	Skyluxe Development Sdn Bhd	CSCEC International
Setapak Sport Complex	Skyluxe Residence	Tropicana Danga Bay
Cheras Home Development Sdn Bhd	Active Edge Sdn Bhd	SUEZ Domain Sdn Bhd
Symphony Tower	East Parc, Bandar Menjalara	KL Gateway, Bangsar
NCT Building & Civil Engineering Sdn Bhd	Aikbee Development (Kepong) Sdn Bhd	Cheras Hong Soon
G-Luxe, Genting Highland	Unio Residence, Kepong	Bangi Vista, Kajang
Scientex (Senai) Sdn Bhd	OCR Land Holdings Sdn Bhd	Island Landcap Sdn Bhd
Scientex Residence, Johor	Flexus Condominium	Palma Laguna Waterpark, Penang
Dijaya Corporation Berhad	Arif Hemat Properties Sdn Bhd	China Railway Engineering Corporation Sdn Bhd
Tropez Residence, Danga Bay, Johor	Matang Villa, Sarawak	D'Rapport, Jalan Ampang
Air Asia	Exsim Group	Sim Liam Group
Air Asia Haed Quarter	Expressionz Professional Suite @ Tun Razak	KL Trillion Residence
Paragon Landscape Sdn Bhd	Zhouyuan Iskandar Contruction Sdn Bhd	Beverly Thompson Sdn Bhd
Paragon 3, Puchong South	Zhuoyuan Iskandar, Johor	Majestic Ipoh Town House
Ivory Properties Sdn Bhd	Aikbee Timber Sdn Bhd	Tanjung Bintang Sdn Bhd/ Kimlun Sdn Bhd
The Latitude, Penang	Pearl Suria Apartment	Molek Pine 1J, 3 and 4 - Berinda Properties Sdn Bhd

Kementerian Kerajaan Malaysia

UM Hospital
Pusat Rawatan, Perak
Kompleks Sukan Negara, Bukit Jalil
Akademi & Pusat Kecemerlangan Badminton Negara, Bukit Kiara

Contactors

Regina USJ - Regina Development	Garden Plaza, Cyberjaya - Myvilla Development Sdn Bhd	Icon City, Petaling Jaya - Mah Sing Group Berhad
M-City, Ampang - Mah Sing Group Berhad	Concerto North Kiara - BCB Berhad	Verdana, Segambut - Bandar Raya Development Sdn Bhd
Mirage Residence - OSK Property Holdings Berhad	Elegan Persona	Duet Residence, Bandar Kinrara - Bandar Kinrara Properties Sdn Bhd
LYL, Shah Alam	Robertson Residence - Gamuda Land Sdn Bhd	Aquota, Sungai Besi - Trinity Group
Saville, The Park Bangsa - MKH Berhad	Lumi Tropicana, Petaling Jaya - Thriven Global Berhad	O'hako Residence - Marimo Land Sdn Bhd
Bangsar Serai @ Bukit Bandaraya, Bandar Raya Development Sdn Bhd	City Waterfront @ Kota Kinabalu, Sabah, Distinctive Design	Yang Teramat Mulia Dato' Undang Luak Johol, Negeri Sembilan, TTH Construction
Aquatic Centre, Bayan Lepas	Eco Meridian	BHL Sandilans
Rice Miller	Hill Park Residence	G2 Hotel, George Town
Komtar, Penang	Grade Residence	City of Dream
Arties 3, Penang	Hyatt Regency	Timurbay
Imperium Residence, Kuantan	Sabah K.K Waterfront	Signature 2, Penang
Twin Galaxy	Zubicon	Palace of Sultan Johor
Grace Residence	Austin Boulevard	Grandview 360°
Impian Heights	Austin Heights Midori Green Apartment	G Residence, Johor
Desaru Hotel, Johor	Setia Sky 88	Straight View 18
D'Aliff Residence	Molek Regency	Istana Brunei Darussalam, Teknojaya

TYPES OF HYPERTHERMAL THERAPY



Type 1 : Dry Sauna

Very high bathing temperature **90—110°C** in an almost totally dry atmosphere. This form of sauna bathing, formerly very popular, is ideal if you like to feel the searing sensation of heat that dries your skin and hair, when your lungs burn with each breath of hot air and you get some inkling of what life might be like in that infamous inferno deep in the bowels of the earth.



Type 2 : Wet Sauna

The classic sauna bath at a temperature of **60—85°C** in a pleasant relative humidity around 20—35%. Now and then you sprinkle a ladle of water over the hot sauna stones and feel the tingling sensation as the heat penetrates deep into your skin, before rounding off by pouring water over the stones for a truly invigorating experience.



Type 3 : Saunarium | Tylarium

A gentler form of bathing at temperatures of **45—65°C** with steam ensuring a constant humidity of 40—65%. This milder climate tempts you to linger a little longer, giving both young and old alike the opportunity to unwind and really relax. And, for that touch of ultimate luxury, you can perfume the air with invigorating herbs or fragrant essences.



Type 4 : Infrared Sauna

Infrared light is part of the Sun's invisible spectrum of light that gives temperature of **35—45°C**. Infrared heater technology uses these far infrared light characteristics to heat the body directly rather than just the air. The experience of a infrared sauna is similar to sunbathing, which gives you the radiant heat that is all your own.



Steam System

Not to be confused with the steam sauna. Here, amid soothing clouds of steam in a special room finished in glass, plastic or tiles, at a low temperature of just **40—45°C** you can enjoy the stimulating sensation of bathing in 100% humidity.

TRADITIONAL LOG - SAUNA

Traditional Sauna is prefabricated, with thermally insulated wall, ceiling and door, generously proportioned benches, removable timber flooring, perfect ventilation, relaxing lighting, hidden conduits in wall section for Sauna Stove, Control panel and heat sensor installation.

For decades, Traditional Log-Sauna has been the obvious choice for hotels, club houses, luxury condominiums, swimming baths, sports facilities and wellness centers.

Over the years, Saunas Builder has pioneered numerous innovations to improve and develop the function, safety and enjoyment of sauna bathing. Our intense technical knowledge and work of craftsmanship had earned us national recognition throughout Malaysia.



STANDARD SPECIFICATION / BQ

Timber Wall & Ceiling Paneling & Insulation

- To supply and install pre-engineering Grade-A kiln dry Finland Spruce timber strip with tongue and groove features and shiplap profile. Walls and ceiling insulated with aluminium double side foil and fiber-glass wool for vapour barrier feature and heat insulation purposes. Ceiling Ventilator will be place at the corner of ceiling in the form of Zig-Zag from the door.

Design Back Rest

- To enhance the comfort of the sauna bath and to reduce the maintenance of the wall paneling.

Timber Flooring

- Removable slatted Finland Spruce with meranti hardwood as frame.

Control Panel

- Complete set of heater control including operation & pre-setting time designed with thermostat with internal wiring connection.

Timber Benches & Flooring

- To supply and install designed timber benches at single or double tiers constructed with Finland Spruce timber c/w hardwood Meranti legs with fasteners.

Insulated Sauna Door

- To supply and install insulated timber sauna door using Finland Spruce construction c/w glass view-panel, ventilation louver, timber handle, self-closing hinges and magnetic door catch.

Sauna System (Stainless Steel)

- Made from superior quality stainless steel container with unique leak proof feature and run with high quality chrome steel elements that allow wet rock steam to create "loily": the moist heat in Finn term. Internal stainless steel baffling plates ensure gravity free convection airflow for greater heating efficiency & economize on cost running.

Wiring Connection with Lighting

- Vapor proof & wall mounted sauna light with bulb 230V/50Hz, 40W - 60W, with related wiring connection to the Heater and Control Panel.

SAUNAS ACCESSORIES



Thermo-Hygrometer



Wooden Bucket-Ladle



15mins Sandtimer



Igneous Dolerite Sauna Stone

SAUNA TIMBER SELECTION



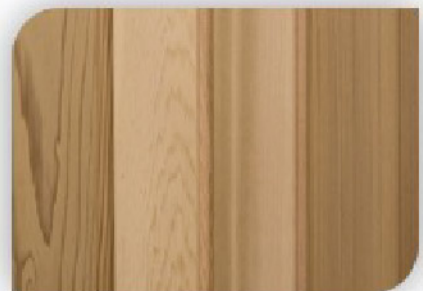
Finland Spruce

Finland Spruce is a softwood with uniform grain texture. A durable wood that withstands heat well and is used widely in saunas. Typically spruce wood has some small knots.



Canadian Fragrance Cypress

Western Red Cedar wood is valued for its unique appearance, aroma, and its high natural resistance to decay. Highly recommended for house interiors and saunas.



DOOR DESIGN



Standard Door



Full Tempered Glass Door



Custom Made full
Wooden Door

OPTIONAL SAUNA ACCESSORIES



Magazine Shelf



Sauna Pillow
(Portable)



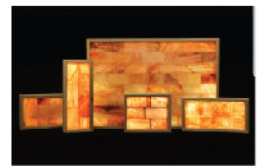
Towel Rail



Panic Button



Cup Holder



Himalaya Salt Wall

LIGHT DESIGN



Standard Lighting



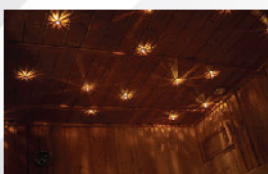
Ceiling Lighting



Concealed Sauna Stripe



Designer Light

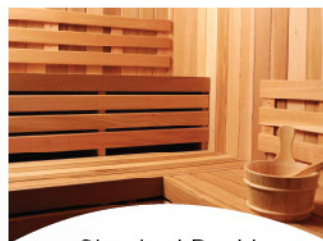


Fiber Optic

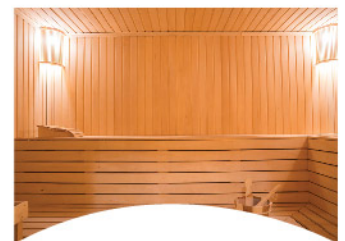


LED Light

BENCH DESIGN



Standard Double
-Single Tier



Comfort Lying Bed



Custom Exclusive

SAUNA HEATER

Feel the rejuvenating spirit of Sigrid Vapor Sauna World. Sigrid sauna heaters are the heart and soul of the sauna. With exclusive heater designs, Sigrid puts more rocks in direct contact with the elements. The result Pure Bliss: a soft steam and a even-tempered heat rising from the rocks. Open air floor design allows quick, effective heating with efficient energy use.

All Sigrid sauna heaters are safety tested and listed for trustworthy use and superior quality. The heaters' double wall structure maintains minimal surface temperatures for safety and increased user pleasure. Stainless steel shell and elements ensure continued high performance and the heat shield's stainless steel finish is sure to complement any sauna. quality materials and expert engineering make Sigrid an incredible sauna experience above all others.



JM 30



SCA 45 - 90 BS/WS



SCA 45 - 90 BS/WS



SAV 105 - 240 CB

Heater Model	Power	Control Panel	Sauna Room		Size Of Heater in mm			Stone (approx) Kg	Voltage (V)
			3 Vol. m	Min (H) m	(W)	(H)	(D)		
JM Series — Wall Mounted Sauna Heater with Built In Control Box									
JM-30	3.0	4+8 h	2-4	1.9	265	530	210	10	15amp/1 ph/240V
BS Series— Wall Mounted Sauna Heater With Control Box Built In									
SCA-45BS	4.5	4+8 h	3-6	1.9	410	580	280	15	15amp/3ph/415V
SCA-60BS	6.0	4+8 h	5-9	1.9	410	580	280	25	15amp/3ph/415V
SCA-90BS	9.0	4+8 h	9-13	1.9	410	580	300	25	25amp/3ph/415V
WB Series — Wall Mounted Sauna Heater With Se arate Control Panel									
SCA-45WB	4.5	Separate	3-6	1.9	410	580	280	15	15amp/3ph/415V
SCA-60WB	6.0	Separate	5-9	1.9	410	580	280	25	15amp/3ph/415V
SCA-90WB	9.0	Separate	9-13	1.9	410	580	280	30	25amp/3ph/415V
SAV Free-Standing Sauna With Separate Control Panel									
SAV-105	10.5	Separate	9-15	1.9	510	700	520	50	30amp/3ph/415V
SAV-120	12.0	Separate	10-18	2.1	510	700	520	50	30amp/3ph/415V
SAV-150	15.0	Separate	14-24	2.1	510	700	520	50	40amp/3ph/415V
SAV-180	18.0	Separate	15-27	2.1	510	700	520	50	45amp/3ph/415V
SAV-210CB	21.0	Separate	22-35	2.3	650	700	520	60	60amp/3ph/415V
SAV-240CB	24.0	Separate	26-42	2.3	650	700	520	60	60amp/3ph/415V

EOS

SAUNA HEATER



EOS M3 W

Power: 3.0kw

Room size: 3 to 5 m³

Dimensions (HWD):
420 x 300 x 200 mm



EOS Bi-O Thermat

Power: 6.0kw, 9.0kw

Room size: 5 to 14m³

Dimensions (HWD):
420 x 300 x 200 mm



EOS Thermat

Power: 4.5kw, 6.0kw,
9.0kw

Room size: 5 to 14 m³

Dimensions (HWD):
580 x 375 x 380 mm



EOS 34.G

Power: 15.0kw, 18.0kw,
21.0kw

Room size: up to 75m³

Dimensions (HWD):
420 x 300 x 200 mm



EOS Bi-O Max

Power: 9.0kw, 12.0kw,
15.0kw

Room size: 9 to 25m³

Dimensions (HWD):
420 x 300 x 200 mm



EOS Euro

Power: 12.0kw

Room size: 7 to 18 m³

Dimensions (HWD):
610 x 460 x 350 mm



EOS Finnrock

Power: 12.0kw

Room size: 7 to 18 m³

Dimensions (HWD):
760 x 413 x 385 mm



EOS Invisio Midi (underbench heater)

Power: 9.0kw, 12.0kw

Room size: 9 to 18 m³

Dimensions (HWD):
420 x 300 x 200 mm

Infrared Radiation (IR)

Infrared Radiation is in fact a necessary form of energy that all living things require for optimum health. If we don't receive enough infrared light from the sun, we become ill and depressed. All life forms on this planet; animals, plants and humans, need this abundant infrared light to be completely tranquil, clam, and healthy.

The radiant heat from it surrounds us and penetrates deeply into our joints muscles and tissues, speeding oxygen flow and increasing circulation. Using a Infrared sauna helps to purify our cells, specifically the cells inside our fat where our body stores waste and harmful toxins, such as cholesterol and heavy metals, When used properly, this healing technology has zero side effects.

Infrared Radiation sauna is an option that may be the perfect solution for you or someone you know and will promote natural body healing which leads to a happier and healthier lifestyle for you and those around you.

IR Carbon Panel





EOS Vitae+ / Vitae+ Compact



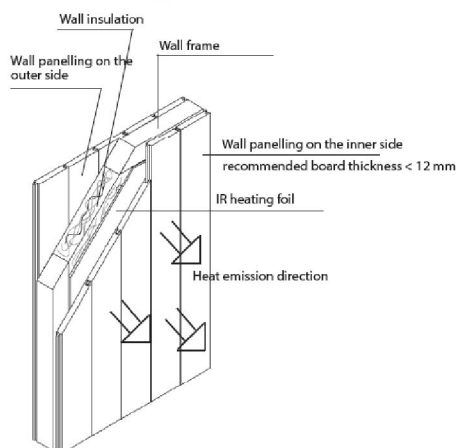
EOS Vitae / Vitae Compact

Model	power	Size (HxWxD)
EOS Vitae	350w, 500w, 750w	900 x 184 x 65 mm
EOS Vitae Compact	350w, 500w, 750w	745 x 184 x 65 mm
EOS Vitae+	350w, 500w, 750w	900 x 185 x 65 mm
EOS Vitae+ Compact	350w, 500w, 750w	835 x 185 x 65 mm

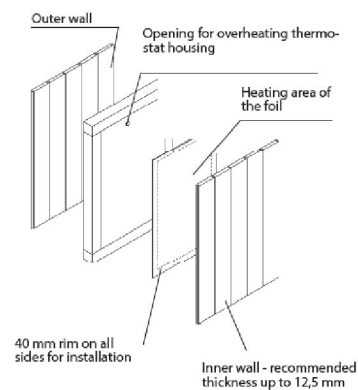
EOS IR Heating Foils



Installation concept



Mounting principle



Model	power	Size (HxWxD)
EOS IR Heating foils	650w	Foil size: 1700 x 800 mm Heating surface: 1620 x 720 mm
	550w	Foil size: 1450 x 800 mm Heating surface: 1370 x 720 mm
	450w	Foil size: 1600 x 600 mm Heating surface: 1520 x 520 mm
	350w	Foil size: 1250 x 600 mm Heating surface: 1170 x 520 mm

PORTABLE SAUNA CABIN

Portable Sauna Cabin is movable, easy to assembly, space-save, durable and power-save. It is ideal for limited patron/s in residential or commercial use .

Portable Sauna Cabin come with two system, Stove with stone and Infrared. Both system can bring you excellent experience for wellness.



STANDARD MODEL

- ✓ Wall Panel x4, Ceiling and Floor Panel
- ✓ Sauna Door with 1'x 2' Viewing Glass
- ✓ Stove or Infrared System
- ✓ Control Panel (Built-in or Separate)
- ✓ Lighting with Internal Wiring
- ✓ Accessories

Stove - Twi-Meter, Sandtimer,
Ladle & Bucket

Infrared - Standard Backrest



LUXURY MODEL

- ✓ Wall Panel x4, Ceiling and Floor Panel
- ✓ Sauna Door with 1'x 2' Viewing Glass (Full Glass Door for optional)
- ✓ Roofing with LED spot lighting
- ✓ Stove or Infrared System
- ✓ Control Panel (Built-in or Separate)
- ✓ Lighting with Internal Wiring
- ✓ Audio System
- ✓ Sauna Pillow, Cup holder and Towel Rail
- ✓ Accessories

Stove - Twi-Meter, Sandtimer,
Ladle & Bucket

Infrared – Standard Backrest

SAUNAS PORTABLE SAUNA CABIN

TSC and FIR is movable, easy to assembly, space-save, durable and power-save. It is ideal for limited patron/s in residential use, beauty saloon, spa centre...

TRADITIONAL Sauna Cabin (Stove System) - TSC

Model	Seater	Size: L x W x H	Bench	240V/1PH
Tsc1 2B or L	1-2	3'6" x 3'6" x 6'6" 3.0 kw	1 tier	15amp
TSC23B or L	2-3	4' x 4' x 6'6"	1 tier	15amp
TSC34B or L	3-4	5' x 4' x 6'6"	2 tier	15amp
TSC45B1 or L	4-5	5' X 5' X 6'6"	2 tier	20amp
TSC45B2 or L	4-5	6' X 4' X 6'6"	2 tier	20amp

TSC-Custom - Customize Sauna Cabin, call us for your dimension.



FAR-INFRARED Sauna Cabin - FIR

Model	Seater	Size: L x W x H (m)	Bench	240V/1PH
FIRC12B or L	1-2	1.00 x 1.00 x 1.83	4+1	15amp
FIRC23B or L	2-3	1.20 x 1.05 x 1.90	4+1	15amp
FIRC34B or L	3-4	1.52 x 1.15 x 1.90	4+2	15amp
FIRC45B or L	4-5	1.80 x 1.15 x 1.90	5+2	20amp
FIRC56B or L	5-6	1.80 x 1.52 x 2.00	5+2	20amp
FIRC56B or L	6-7	2.20 x 2.00 x 2.00	7+3	20amp

TSC-Custom - Customize Sauna Cabin, call us for your dimension.



STEAM ROOM

Steam Room, amid soothing clouds of steam in a special room finished in Plastic, Glass, Tiles or Marble to cope with the 100% humidity, at a low temperature of 40 - 45°C.

The unique benefits of steam room have become increasingly popular in modern society. The physiology of perspiration includes how sweating helps rid the body of wastes, regulates body temperature, and invigorates our largest organ, the skin. The metabolic effects of a steam room, the positive influence of negative ions released by steam, and the more subtle spiritual and social benefits of the steam experience all contribute to a heightened sense of well-being. Medical studies show that frequent visits to the steam room helps reduce stress and keep your circulatory system running smooth.



SAUNAS STEAM BASIC

**Steam generator for steam rooms.
For domestic and commercial use.**

Compact steam generator for steam rooms. Suitable for commercial and domestic use, innovative construction with internal placed heating elements. Integrated automatic drainage and auto wash system.

Features and Advantages:

- ✓ Stable and quick steam production
- ✓ Integrated control unit with modern Touch Screen display
- ✓ Simple, easy operation via capacitive keys.
- ✓ Overheat / dry-burnt protection system with security valve
- ✓ Includes steam outlet, brass union for steam output
- ✓ Optional for essence dosing system is available



ACRYLIC STEAM ROOM

Acrylic steam rooms are made of high-tech, best insulation, vacuum-formed special-grade white acrylic material for a rigid, steam-tight and heat resistant construction. Supplied in ready-to-assemble wall and roof sections and comfortable seating. Seats and benches are designed not only for leads condensation to floor drain, but gained optimum comfort and relaxation for tired muscles, while the boldly arched lines of the domed ceiling prevents condensation from dripping on bathers. The door is made from tempered safety glass in a sturdy frame with handles of anodized aluminum. These luxurious steam rooms are a perfect complement to public bathing facilities in hotels, spas, fitness centers, and gyms.

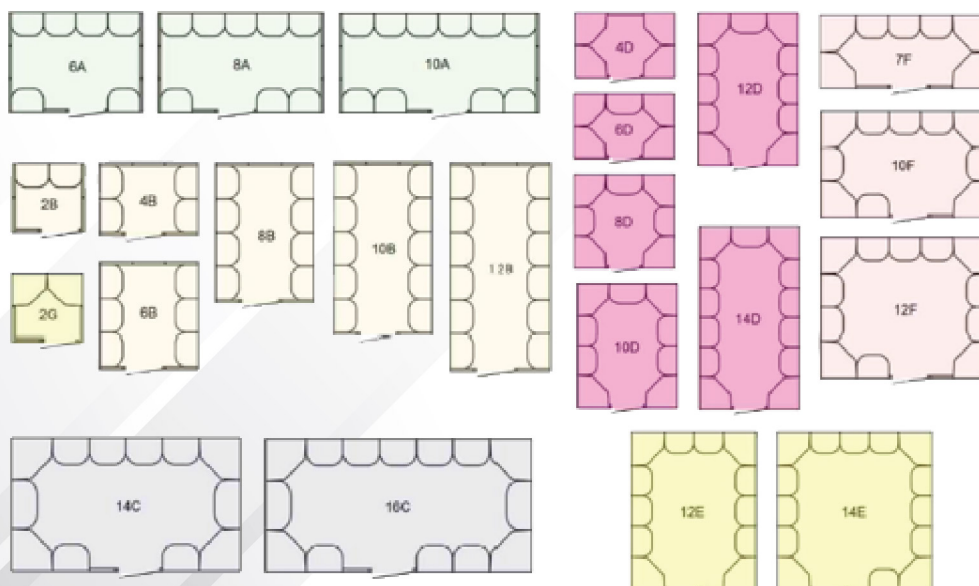
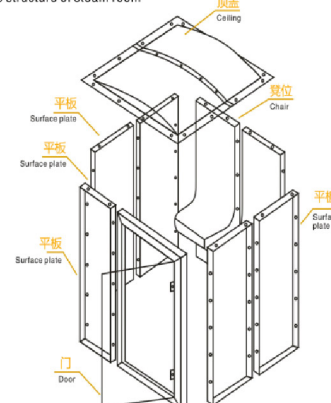


Model	Size (cm)	Seater/s	Machine
6A	250*190*225	6	9kw
8A	310*190*225	8	9kw
10A	370*190*225	10	9kw
12A	430*190*225	12	12kw
2B	110*130*215	2	4.5kw
4B	190*130*225	4	6kw
6B	190*190*225	6	6kw
8B	190*250*225	8	9kw
10B	190*310*225	10	9kw
12B	190*370*225	12	12kw
10C	254*212*225	10	9kw
12C	314*212*225	12	9kw
14C	374*212*225	14	12kw
16C	434*212*225	16	12kw

~ Exterior surface and floor not provided

Model	Size (cm)	Seater/s	Machine
4D	212*134*225	4	6kw
6D	212*134*225	6	6kw
8D	212*194*225	8	9kw
10D	212*254*225	10	9kw
12D	212*314*225	12	12kw
14D	212*376*225	14	12kw
16D	212*434*225	16	15kw
12E	254*314*225	12	12kw
14E	374*314*225	14	16kw
7F	314*134*225	7	9kw
10F	314*194*225	10	9kw
12F	314*254*225	12	9kw
14F	314*314*225	14	12kw
2G	118*116*220	2	4.5kw
2G	134*127*220	2	4.5kw

湿蒸房结构图
The structure of steam room



STEAM SHOWER & BATHTUB

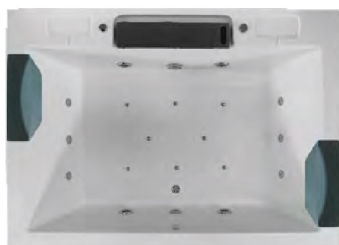
WS- 071

Size: 1800x800x600mm



WS- 0506

Size: 1800x1300x650mm



WS- 027

Size: 1300x1300x630mm



WS- 085

Size: 1840x1240x650mm



WS-15085

Size: 1520x850x700mm

WS-16085

Size: 1620x850x700mm

WS-17085

Size: 1720x850x700mm



OUTDOOR SPA



JY8005

Dimensions: 2100mm x 1050mm x 760mm
Seating : 2seals
Capacity: 600L
Total Jets: 23pes

Ory Wefght: 180kg
Filled Weight: 780kg

High Performance Pumps: 1x2HP 2speeds
Heater : 1x2kw
Blower : 300W
Ozone : 1pc
Drafn: 1pc
Filtration: 1 pc

LED Light : 1pc
Controller: 1 pcs
Synlhellc Cablnel : 1 pcs
Headrest: 2pcs



JY8005A

Dimensions: 2100mmx1050mmx760mm
Seating : 1 lounger
Capacity: 600L
Total Jets : 23pcs

Ory Weight: 180kg
Filled Weight : 780kg

High Performance Pumps: 1x2HP 2speeds
Heater: 1 x2kw
Ozone : 1pc
Drain: 1pc
Filtration : 1pc

LEO Light : 1pc
Conlroller: 1 pcs
Synthetic Cabinet : 1pc
Headrest: 1pcs



JY8007

Dimensions : 2200mm x 2200mm x 930mm
Seating : 3seats+2 lounger
Capacity : 1250L
Total Jets : 42pcs

Dry Weight: 380kg
Filled Weight: 1630kg

High Performance Pumps: 2x2HP
Circulation Pump: 1 x0.5HP
Heater: 1 x3kw
Ozone : 1pc
Drain: 1pc
Filtration: 1pc

LED Light : 1pc
Controller: 1 pcs
Synthetic Cabinet : 1pc
Headrest: 3pcs



JY8009

Dimensions : 2130mmx2130mmx880mm
Seating : 3seats + 2 lounger
Capacilly : 1480L
Total Jets: 57pcs

Dry Weight : 3810kg
Filled Weight: '1950kg

High Performance Pumps : 2x3HP
Circulation Pump: 1x0.5HP
Heater: 1x3kw
Blower: 400W
Ozone : 1pc
Drain : 1pc
Filtration: 1pc

LED Light : 1pc
Aromatherapy: 1pc
Controller: 1pcs
Synthetic Cabinet : 1pc
Headrest: 3pcs



OUTDOOR SPA



JY8010

Dimensions : 2130mmx2130mmx880mm
Seating : 4seats + 1 lounger
Capacity: 1450L Dry Weight: 380kg
Total Jets: 69pcs Filled Weight : 1880kg

High Performance Pumps : 2x3HP
Circulation Pump: 1x0.5HP
Heater: 1x3kw LED Light : 1pc
Blower: 400W Aromatherapy : 1pc
Ozone: 1pc Controller : 1pcs
Drain : 1pc Synthalic Cabinet : 1pc
Filtration: 1pc Headrest: 3pcs



JY8003

Dimensions : 2350mm x2350mm x950mm
Seating : 3seats +2 lounger
Capacity : 1700L Dry Weight : 400kg
Total Jets: 59pcs Filled Weight : 2200kg

High Performance Pumps: 2x3HP
Circulation Pump: 1 x0.5HP
Heater : 1x3kw LED Light : 1pc
Blower : 400W Ozone : 1pc
Drain: 1pc Filtration : 1pc
Aromatherapy: 1pc Controller: 1 pcs
Synthetic Cabinet : 1pc
Headrest : 3pcs



JY8013

Dimensions : 2100mmx1550mmx860mm
Seating : 2seats + 1 lounger
Capacity: 1100L Dry Weight: 280kg
Total Jets: 39pcs Filled Weight : 1380kg

High Performance Pumps : 1x2HP
Circulation Pump: 1x0.5HP
Heater: 1x3kw LED Light : 1pc
Blower: 300W Aromatherapy : 1pc
Ozone: 1pc Controller : 1pcs
Drain : 1pc Synthalic Cabinet : 1pc
Filtration: 1pc Headrest: 3pcs



JY8013

Dimensions : 2200mmx2200mmx940mm
Seating : 6 seats
Capacity: 1400L Dry Weight: 380kg
Total Jets: 44pcs Filled Weight : 1780kg

High Performance Pumps : 2x2HP
Circulation Pump: 1x0.5HP
Heater: 1x3kw LED Light : 1pc
Blower: 300W Aromatherapy : 1pc
Ozone: 1pc Controller : 1pcs
Drain : 1pc Synthalic Cabinet : 1pc
Filtration: 1pc Headrest: 4pcs

